



## Quality for SYSPRO by uniPoint

### Overview

To provide a suite of quality and continuous improvement modules that are designed to help your company meet compliance, track, control and reduce costs of quality and maintenance with simple and intuitive software that will help you achieve excellence.

#### Core Modules (Included):

- Non-Conformance
- Corrective/Preventative Action
- Document Control
- Tool & Equipment Management
- Customer Service

#### Optional Bundled Modules:

- Auditing
- Education & Training
- Health & Safety
- Surveys
- Trend Analysis

### The Value of Quality for SYSPRO

- Maintain and measure the cost and frequency of quality events
- Rapid ROI with quick deployment and intuitive software
- Encourage a Lean and paperless environment
- Improve lead time on activities by providing use-to-do lists
- Easy notification of quality events with the email broadcast capability
- ISO compliance tool
- Many standard analysis reports that can be emailed or exported to MS Office or PDF
- Customizable key indicators dashboard
- Always be prepared for an audit



### Matching Quality for SYSPRO to your business

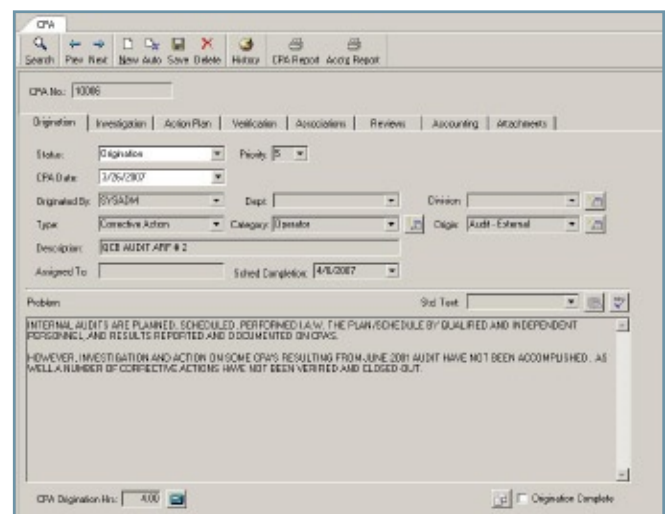
- Access SYSPRO data directly using ODBC connectivity
- Improve efficiency and accuracy by reducing redundant data entry
- Ensure the correct information is available by associating an unlimited number of attachments
- Customize data labels as required
- Choose Access or SQL database
- Security defined per user
- Understand the cost of quality in your organization
- Assign and track tasks with automated to-do lists

### Integration

- Access relevant SYPRO data via ODBC/SQL

### Reports and Audit Trails

- 80 Continuous Improvement Management Reports
- Detailed reports and audit trails available in each module
- Key Indicators Dashboard
- Detailed Trend Analysis





Quality for SYSPRO by uniPoint cont...

**Core Modules**

**Non-Conformance (NC)**

Offers the ability to manage the life-cycle of non-conformance events with cost-tracking and assignment of user responsibility at every stage.

- Tracks total costs of non-conformance
- Prioritize non-conformance events
- Advanced security options

**Corrective/Preventative Action (CPA)**

Integrated with the NC, Health & Safety and Auditing modules, the CPA module provides a central point to manage continuous improvement items. Track the impact of CPAs and measure reduction over time.

- Organize data for external audits
- Maintain visibility of long-term events
- Track cost at every CPA stage
- Schedule and follow through all CPAs

**Tool & Equipment Management**

A comprehensive production tool and capital equipment management system that tracks proactive planned maintenance as well as unplanned repair events, and provides detailed scheduling and cost analysis.

- Setup equipment library
- Automate planned maintenance
- Estimate versus actual cost comparison
- Understand downtime costs

**Document Control**

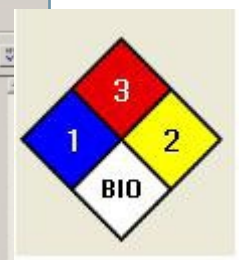
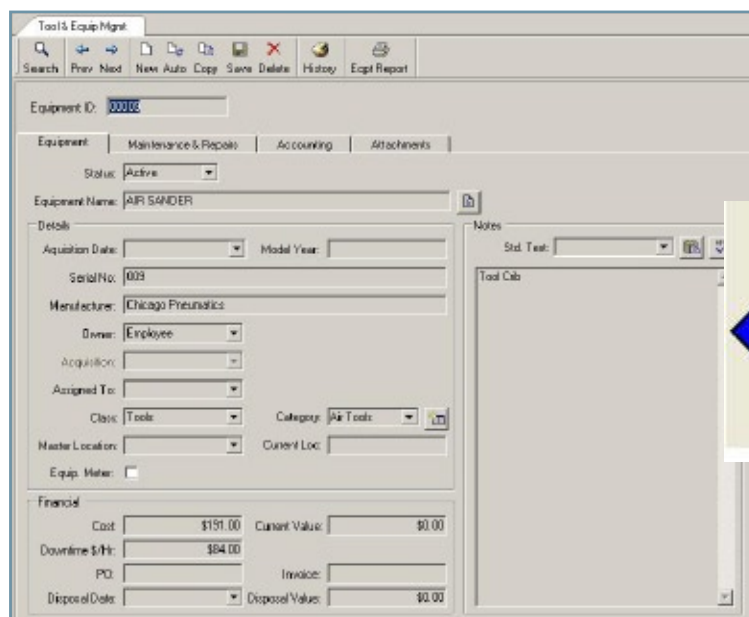
Automate document control with sign-off and change control of all document types from a central, secure repository that makes search and retrieval easy during inspections and audits.

- FDA 21 CFR Part 11 & 820 compliance
- Encrypted sign-off passwords
- Strict revision control
- Increased management visibility
- Advanced search tools
- Email revision changes to employees

**Customer Service**

Streamline your complaint process with configurable workflow to provide a closed-loop mechanism to implement effective, timely resolutions to customer issues. Ensure industry and regulatory compliance with improved product quality and reduced costs associated with customer complaints.

- Reduce quality cycle times
- Improve communication
- Easy escalation of priorities
- Integrate with existing quality information





Quality for SYSPRO by uniPoint cont...

**Optional Bundled Modules**

**Auditing**

Automate and manage internal and external audits that check business process compliance, and link to the Corrective Action module for issues or findings that are uncovered during the audit.

- Reduce Audit cycle-times
- Set Audit and Audit review schedules
- Track and record costs
- Maintain visibility over findings

**Education & Training**

Effectively manage your training process to ensure personnel are adequately trained to deliver reliable and high quality products and services.

- Streamline training communication
- Define occupations and training requirements
- Perform gap analysis for individuals or occupation
- Analyze costs of current or future training needs

**Health & Safety**

Ensure compliance and avoid potential costly fines, citations or legal liability while promoting a healthy and safe environment for your employees by efficiently storing and managing all of your required employee health and safety records.

- Manage life-cycle of safety incidents
- Reduce risk of OSHA fines and Workers Compensation costs
- Manage/Schedule safety meetings
- Classify MSDS and link documents

**Surveys**

Provides the necessary tools to conduct surveys and analyze the results with powerful response management capability. Easily create surveys for customers, vendors, employees or miscellaneous respondents.

- Quick and easy to create
- Unlimited surveys and responses allowed
- Deploy via email, fax, mail or the Web
- Analyze and compare surveys

**Trend Analysis**

Effectively use your Quality and Continuous Improvement data for planning, maximizing profits

- Compare budget to actual
- Identify positive or negative trends instantly
- Reduce Quality Management Life Cycle

**Training Gap Report**

ID	Name	R/R	Description	Completed	Date Completed	Cost
<b>Occupation: CNC Programmer</b>						
Employee: LM LARRY VANE						
90007	MAC 112	A	Machining Technology II	<input type="checkbox"/>		\$500.00
90008	MAC 113		Machining Technology II	<input type="checkbox"/>		\$250.00
90009	MAC 112		Machining Technology II	<input type="checkbox"/>		\$0.00
90012	MAC 124		CNC Milling	<input type="checkbox"/>		\$650.00
90013	MAC 151		Machining Calculations	<input type="checkbox"/>		
						Employee Cost: \$1,400.00
						Occupation Cost: \$1,400.00
<b>Occupation: CNC Machinist</b>						
Employee: BB BILL HILLSTROM						
90009	MAC 131		Introduction to CNC	<input type="checkbox"/>		\$1,000.00
						Employee Cost: \$1,000.00
						Occupation Cost: \$1,000.00
<b>Occupation: Screw Machine Operator</b>						
Employee: MG MOLLY BARBER						
90007	MAC 112	A	Machining Technology II	<input type="checkbox"/>		\$500.00
						Employee Cost: \$500.00
						Occupation Cost: \$500.00
						Total Cost: \$2,900.00

